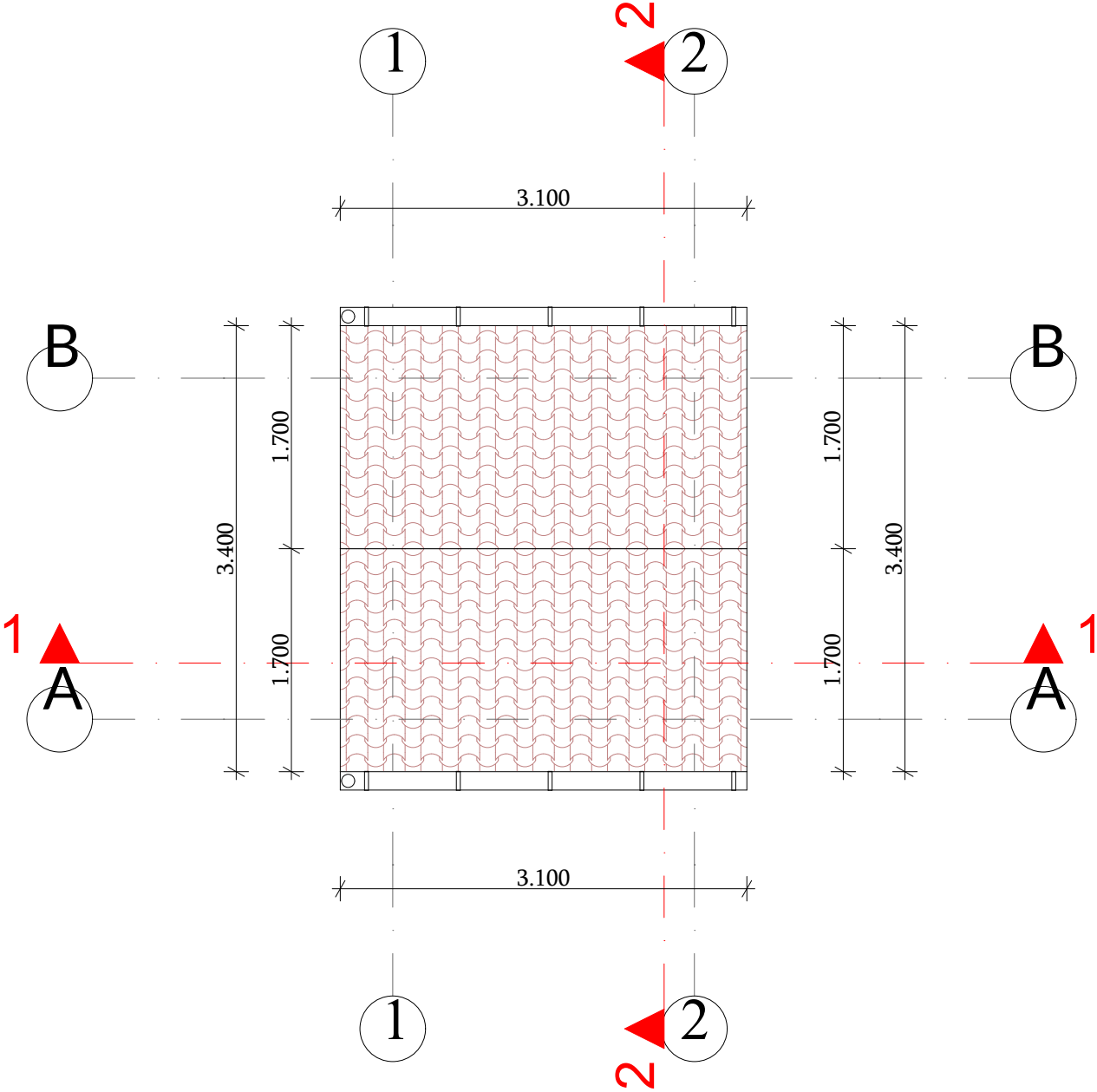
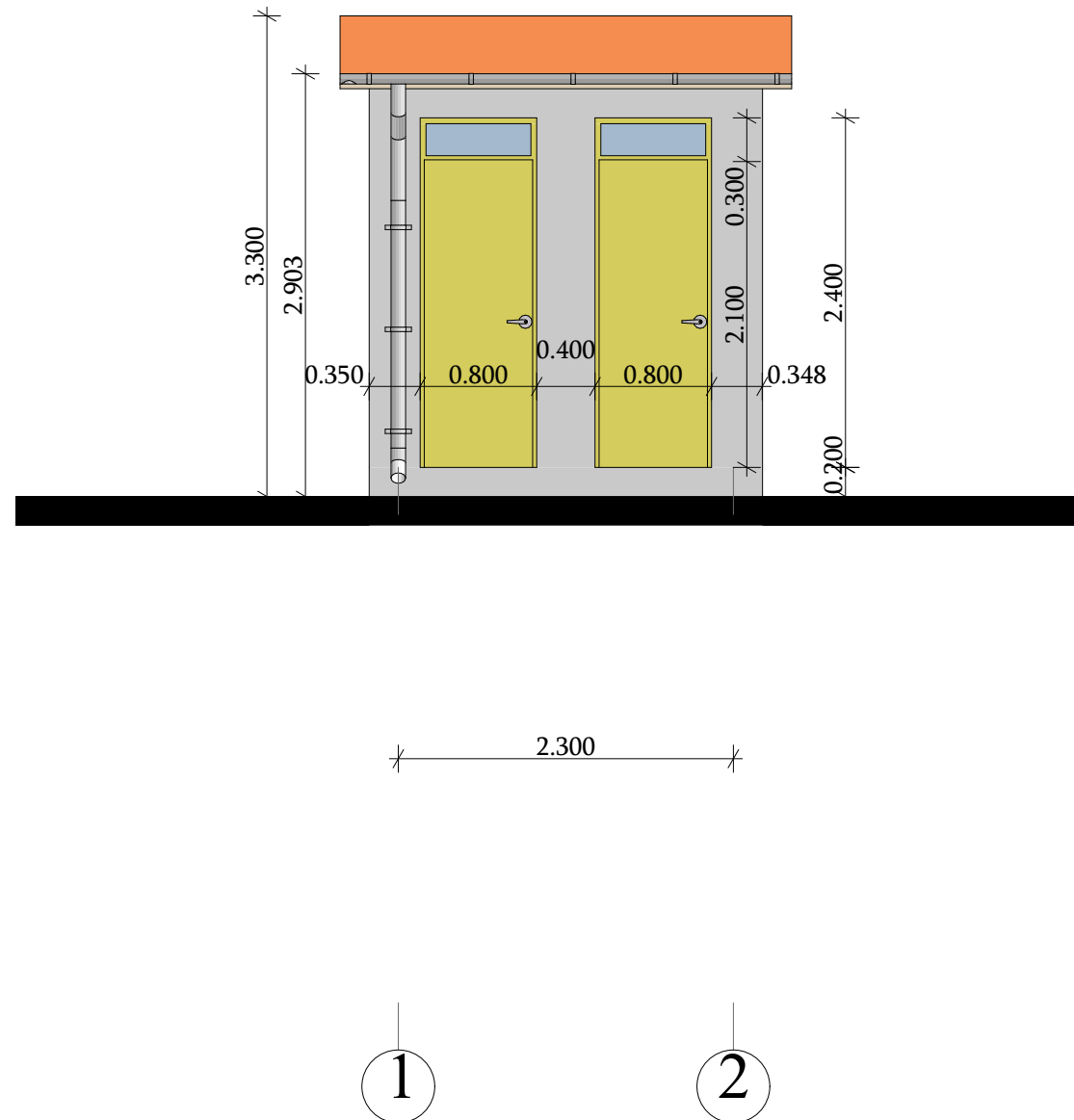


The diagram shows a rectangular bathroom floor plan with a total width of 2.700 and a total depth of 3.000. The plan is divided into four quadrants by a horizontal centerline (labeled A-A) and a vertical centerline (labeled 1-1). Each quadrant contains a fixture: a bathtub (top-left and bottom-right) and a toilet (top-right and bottom-left). The area of each fixture is labeled as 1.320 m². The plan includes detailed dimensions for the fixtures and the surrounding space, as well as section line indicators A-A and 1-1 with arrows pointing to the respective sections.

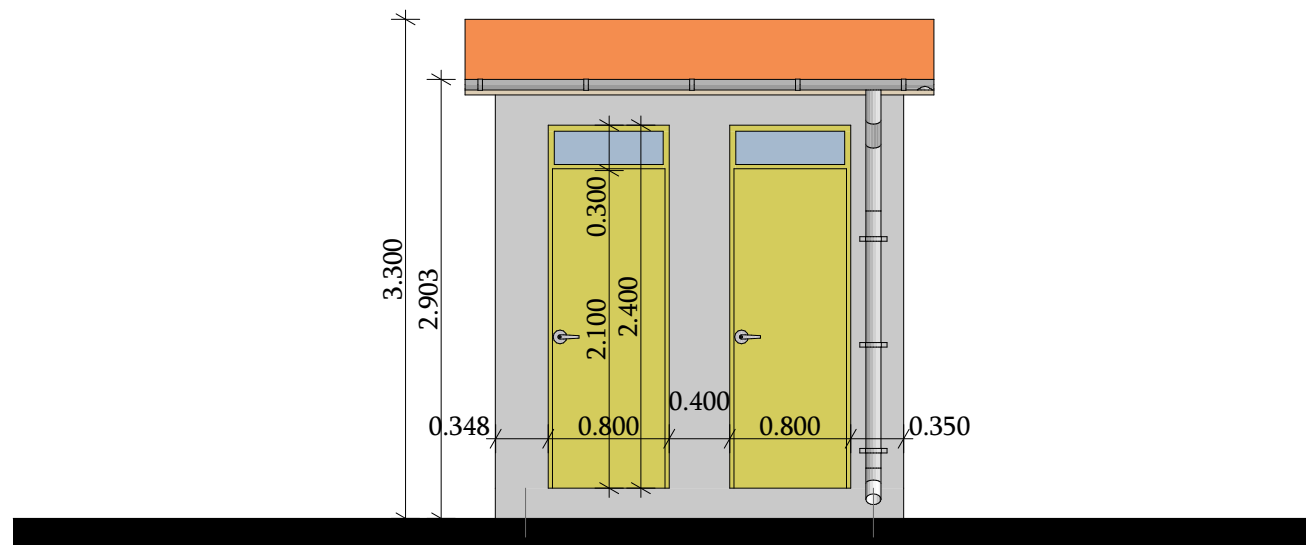
Roofing plan M. 1:50



# Facade 1-2 between the axes M. 1:50



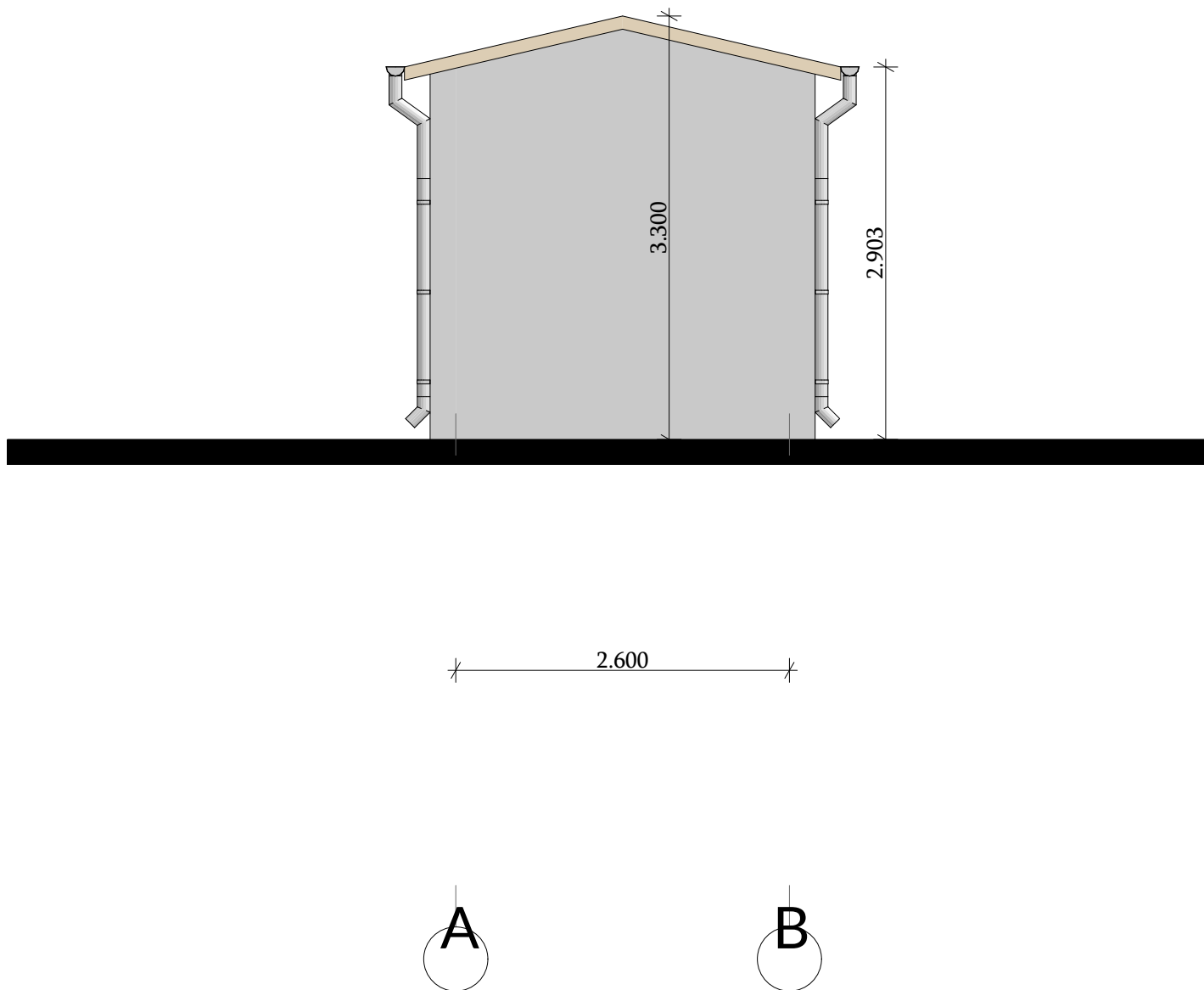
# Facade 2-1 between the axes M. 1:50



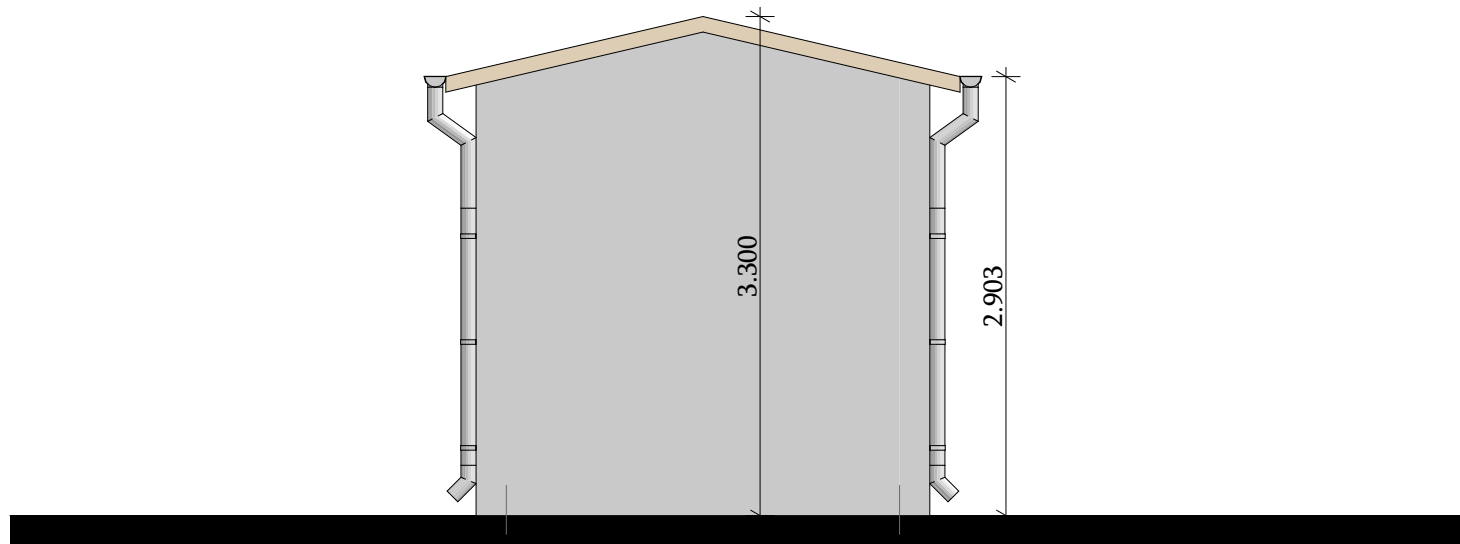
2

1

# Facade A-B between the axes M. 1:50



შახადი ბ-ა ღერძებს შორის მ. 1:50



2.600

